

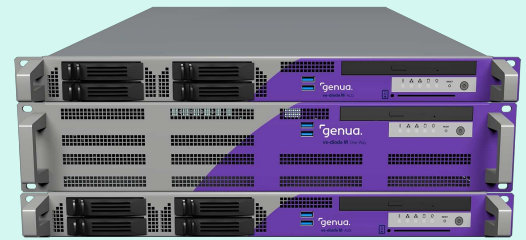
vs-diode



Hardware



Data Diode



MODEL	
2x Application Level Gateway	
Power Supply	2 x 300 W
Revision	3.0
CPU	6 Cores, 3.4 GHz
Memory	16 GB ECC
Network interfaces min.	4 x 1 Gbit/s + 2 x 10 Gbit/s multi-mode fiber
Network interfaces max.	8 x 1 Gbit/s + 2 x 10 Gbit/s multi-mode fiber
Network interfaces 10 Gbit/s max.	4 x 1 Gbit/s + 4 x 10 Gbit/s ¹
Flash Drive	250 GB SSD
RAID level	1
Disk backup	+
DVD-ROM Drive	+
Graphics Connector	VGA
Serial Ports	2
USB Port	3.0
One Way	
Power Supply	2 x 300 W
Revision	3.0
CPU	4 Cores, 2.4 GHz
Memory	8 GB ECC
Network interfaces min.	2 x 10 Gbit/s SFP+ multi-mode fiber
DVD-ROM Drive	+
Graphics Connector	VGA
Serial Ports	1
USB Port	3.0
Performance	
TCP	3200 Mbit/s ²
TCP single stream	870 Mbit/s ²
UDP	270 Mbit/s ³

¹ 1/10 Gbit/s RJ45 or SFP+ with optional multi- or mono-mode fiber optic transceiver

² tcp relay, packets: TCP 1448 byte

³ udp relay, packets: UDP 1470 byte

vs-diode



Hardware



MODEL	
Chassis	
Power consumption load	410 W
BTU/h load	1420
Fixture	19" rackmount
Width	430 mm (19")
Height	176 mm (4 U)
Depth	635 mm
Weight	33 kg
Weight (incl. Packaging)	51 kg

	ENVIRONMENT OPERATION	ENVIRONMENT STORAGE
Voltage per ALG	100 - 240 V AC, 60 - 50 Hz, 5 - 3 A, connector 2x IEC-C14	-
Voltage One Way	100 - 240 V AC, 60 - 50 Hz, 5 - 3 A, connector 2x IEC-C14	-
Temperature	10 - 35 °C	-20 - 70 °C
Humidity	20 - 80 % non condensing	10 - 80 % non condensing
Shock	25 G / 2 ms	300 G / 2 ms
Vibration	5 - 500 Hz / 0.5 G	0 - 500 Hz / 3 G
Norms	CE	-